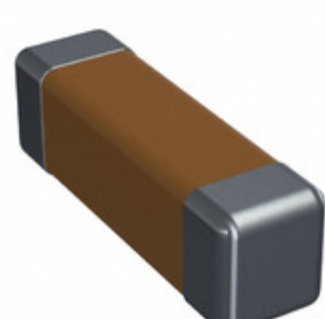


CDR02BP221BKZMAT



Part Number: [CDR02BP221BKZMAT](#)
Manufacturer: [Electro-Films \(EFI\) / Vishay](#)
Description: CAP CER 220PF 100V 10% BP 1805
Data sheet: [CDR Series \(MIL-PRF-55681\)](#)

RoHS Status: Contains lead / RoHS non-compliant
Ship From: Hong Kong
Shipment Way: DHL/Fedex/TNT/UPS/EMS

Images are for reference only.
 See Product Specifications for product details.
 Buy CDR02BP221BKZMAT with confidence from
 Component-World.HK, 1 Year Warranty

[Request For Quotation](#)

PRODUCT PARAMETER

Part Number	CDR02BP221BKZMAT	Manufacturer	Electro-Films (EFI) / Vishay
Description	CAP CER 220PF 100V 10% BP 1805	Lead Free Status / RoHS Status	Contains lead / RoHS non-compliant
Quantity Available	187659 pcs	Data sheet	CDR Series (MIL-PRF-55681)
Category	Capacitors	Voltage - Rated	100V
Tolerance	±10%	Thickness (Max)	0.055" (1.40mm)
Temperature Coefficient	BP	Size / Dimension	0.180" L x 0.050" W (4.57mm x 1.27mm)
Series	Military, MIL-PRF-55681, CDR02	Ratings	-
Packaging	Tape & Reel (TR)	Package / Case	1805 (4512 Metric)
Other Names	CDR02BP221BKZMAT-MIL	Operating Temperature	-55°C ~ 125°C
Mounting Type	Surface Mount, MLCC	Moisture Sensitivity Level (MSL)	1 (Unlimited)
Manufacturer Standard Lead Time	32 Weeks	Lead Style	-
Lead Spacing	-	Lead Free Status / RoHS Status	Contains lead / RoHS non-compliant
Height - Seated (Max)	-	Features	-
Failure Rate	M (1%)	Detailed Description	220pF ±10% 100V Ceramic Capacitor BP 1805 (4512 Metric)
Capacitance	220pF	Applications	General Purpose

Component-World.com is a Reliable Stocking Distributor of Electronic Components. We specialize in all Electro-Films (EFI) / Vishay series electronic components. We have 187659 pieces of Electro-Films (EFI) / Vishay CDR02BP221BKZMAT in stock available now. Request a quote from electronics components distributor at Component-World.com, our sales team will contact you within 24 hours.
 RFQ Email: info@Components-World.com

RELATED PRODUCTS

	Part#: CDR02BP271BJUSAR Description: CAP CER 270PF 100V BP 1805	Manufacturers: Electro-Films (EFI) / Vishay	RFQ
	Part#: CDR02BP221BKWSAB Description: CAP CER 220PF 100V BP 1805	Manufacturers: Electro-Films (EFI) / Vishay	RFQ
	Part#: CDR02BP271BJUSAB Description: CAP CER 270PF 100V BP 1805	Manufacturers: Electro-Films (EFI) / Vishay	RFQ
	Part#: CDR02BP271BJURAB Description: CAP CER 270PF 100V BP 1805	Manufacturers: Electro-Films (EFI) / Vishay	RFQ
	Part#: CDR02BP271BJURAT Description: CAP CER 270PF 100V BP 1805	Manufacturers: Electro-Films (EFI) / Vishay	RFQ
	Part#: CDR02BP221BKZSAT Description: CAP CER 220PF 100V 10% BP 1805	Manufacturers: Electro-Films (EFI) / Vishay	RFQ
	Part#: CDR02BP221BKZRAT Description: CAP CER 220PF 100V 10% BP 1805	Manufacturers: Electro-Films (EFI) / Vishay	RFQ
	Part#: CDR02BP221BKYSAB Description: CAP CER 220PF 100V BP 1805	Manufacturers: Electro-Films (EFI) / Vishay	RFQ
	Part#: CDR02BP221BKZPAT Description: CAP CER 220PF 100V 10% BP 1805	Manufacturers: Electro-Films (EFI) / Vishay	RFQ
	Part#: CDR02BP271BJUSAJ Description: CAP CER 270PF 100V BP 1805	Manufacturers: Electro-Films (EFI) / Vishay	RFQ
	Part#: CDR02BP221BKYSAT Description: CAP CER 220PF 100V BP 1805	Manufacturers: Electro-Films (EFI) / Vishay	RFQ
	Part#: CDR02BP221BKYSAR Description: CAP CER 220PF 100V BP 1805	Manufacturers: Electro-Films (EFI) / Vishay	RFQ
	Part#: CDR02BP221BKWSAJ Description: CAP CER 220PF 100V BP 1805	Manufacturers: Electro-Films (EFI) / Vishay	RFQ
	Part#: CDR02BP221BKUSAR Description: CAP CER 220PF 100V BP 1805	Manufacturers: Electro-Films (EFI) / Vishay	RFQ
	Part#: CDR02BP271BJUSAT Description: CAP CER 270PF 100V BP 1805	Manufacturers: Electro-Films (EFI) / Vishay	RFQ
	Part#: CDR02BP221BKUSAT Description: CAP CER 220PF 100V BP 1805	Manufacturers: Electro-Films (EFI) / Vishay	RFQ
	Part#: CDR02BP221BKYSAJ Description: CAP CER 220PF 100V BP 1805	Manufacturers: Electro-Films (EFI) / Vishay	RFQ
	Part#: CDR02BP221BKWSAR Description: CAP CER 220PF 100V BP 1805	Manufacturers: Electro-Films (EFI) / Vishay	RFQ
	Part#: CDR02BP271BJWSAB Description: CAP CER 270PF 100V BP 1805	Manufacturers: Electro-Films (EFI) / Vishay	RFQ
	Part#: CDR02BP221BKWSAT Description: CAP CER 220PF 100V BP 1805	Manufacturers: Electro-Films (EFI) / Vishay	RFQ

Related keywords for CDR02BP221BKZMAT

Electro-Films (EFI) / Vishay CDR02BP221BKZMAT	CDR02BP221BKZMAT distributor	CDR02BP221BKZMAT supplier	CDR02BP221BKZMAT price
CDR02BP221BKZMAT download datasheet	CDR02BP221BKZMAT datasheet	CDR02BP221BKZMAT stock	buy CDR02BP221BKZMAT
Electro-Films (EFI) / Vishay CDR02BP221BKZMAT	Electro-Films (EFI) / Vishay CDR02BP221BKZMAT	Vishay Electro-Films CDR02BP221BKZMAT	Phoenix Passive Components / Vishay CDR02BP221BKZMAT